



CITY OF
BALLARAT 

Event Venues

Ballarat is a progressive regional city with a responsive council that values strong partnerships and offers streamlined processes that make event life easier.

We seek to attract other events looking to leverage our diverse range of indoor venues and outdoor spaces, developed infrastructure, accommodation options and proximity to major population centres.

Whether it's a series of graffiti installations dotted about historic city streetscapes,

a hive of sporting activity or hands-on experiences in Australia's oldest regional art gallery, we're here to make your event in Ballarat a reality and we know what it takes. The blood, sweat and tears; the celebrations; the big picture made up of thousands of small details, and the race to the end to deliver an exceptional experience.

So, let's make your event happen in Ballarat.



Alfred Deakin Place

Located at the rear of the Art Gallery of Ballarat (40 Lydiard St North) between Lydiard St North and Camp Street

Alfred Deakin Place, beside the Art Gallery of Ballarat, and features seating areas, landscaping, and umbrellas to enable people to stay and enjoy the space.

To bring the Art Gallery outside, the space features four portable backlit exhibition panels that are used to display visual art and are powered by solar panels.

This outdoor area is ready to be activated and is programmed by the Art Gallery of Ballarat.

There are a variety of seating styles and spaces, complemented with raised garden beds. Wind barriers and umbrellas to assist with shade and weather coverage.

A permanent large five metre screen has been recently installed in the area to showcase local film and artwork from the Art Gallery of Ballarat as well as providing a communal viewing space for select televised sporting events.

Primary uses: music performance and cultural events, art events

☎ (03) 5333 3333 ✉ events@ballarat.vic.gov.au

 1,000m²



Ballarat Airport

Airport Road, Mitchell Park 3355

The Ballarat Airport is used as a venue by a diverse range of local clubs and community groups.

Featuring two sealed runways and one unsealed runway, the Airport offers a large open space. The two sealed taxiways also connect to the hangar area.

Situated 7 kms northwest of the Ballarat CBD, the Airport was first constructed in 1940 at the outset of World War 2 as a training school for Wireless Air Gunners.

Today, the Airport has around 80 flight movements per day made up of business from emergency services, general aviation and flight training. The former RAAF buildings are also occupied by community and sporting clubs including amateur radio, billiard and snooker, model railway, car, polocrosse and woodworkers guild.

Primary uses: Suitable for car rallies, show and shine events, equipment demonstrations.

☎ (03) 5320 5881 ✉ jonathanwillsher@ballarat.vic.gov.au

👉 www.ballarat.vic.gov.au

 4,500,000m²





Ballarat Aquatic and Lifestyle Centre

Prince of Wales Park, Gillies Street Nth, Ballarat 3350

The Ballarat Aquatic and Lifestyle Centre is Ballarat's premier sport and recreational facility in Ballarat.

Featuring first class facilities and programs, the newly upgraded facility features indoor 50 and 25 metre pools, multi-purpose warm water pool, learn-to-swim pool, 24-seat spa, steam room, health club, two group fitness studios, children's centre, gymnastics hall, café, meeting rooms and a range of change room facilities. The Centre caters for individuals of all ages and stages, providing a range of fitness classes, health and wellness programs including personal training.

The Ballarat Aquatic and Lifestyle Centre has proven capacity to host major sporting events with the Victorian Short Course Swimming Championships held at the Centre in 2015 and 2016.

Primary uses: Sporting events, team building sessions, school groups.

☎ (03) 5334 2499 ✉ balc@ballarat.vic.gov.au
📍 www.ballarataquaticcentre.com



Ballarat Botanical Gardens – Centre Gardens

Gillies Street Nth, Ballarat 3355

One of Australia's most significant cool climate gardens, the Ballarat Botanical Gardens feature a remarkable collection of mature trees and marble statues set among colourful bedding displays.

Located on the western shore of Lake Wendouree, approximately four kilometres from Ballarat's CBD, the gardens are a popular and invaluable heritage and recreational location for residents and visitors.

The gardens precinct covers 40 hectares and are divided into four distinct zones. The central part of the gardens features the traditional, 'gardenesque' style, while open parklands on either side are known as the North and South Gardens and the area alongside Lake Wendouree as the Lake foreshore precinct

☎ (03) 5320 5193

↗ 65,000m²



Ballarat Botanical Gardens – North Gardens

Cnr Wendouree Parade & Zoo Drive, Lake Gardens 3350

Contact: Ballarat Botanical Gardens

This popular 10 hectare space adjoining the Ballarat Botanical Gardens is remarkably versatile.

It offers recreational parkland ideal for hosting temporary structures such as circuses, mega-musicals and concert performances, and an oval and a cricket pitch for informal matches.

Also part of the reserve is the Picnic Pavilion, a popular venue for family reunions and other celebrations.

Primary uses: Suitable for music concerts, garden club expos and car enthusiast events.

☎ (03) 5320 5135 ✉ operationsadmin@ballarat.vic.gov.au

📍 www.ballarat.vic.gov.au

↗ 10,000m²



Ballarat Botanical Gardens – South Gardens

Set on 35,000sqm, the Ballarat Botanical Gardens South Gardens is a versatile space. The South Gardens feature the Ex-POW Memorial as well as the Ballarat Tramway Museum. Open grassland and mature trees make the area suitable for a range of events and activations. Accessibility to town can be via public transport (1.5km walk from Wendouree Train Station) or a short drive. Primary uses: Suitable for music concerts, car enthusiast events, markets

☎ (03) 5320 5135 ✉ operationsadmin@ballarat.vic.gov.au

📍 www.ballarat.vic.gov.au

↗ 35,000m²





Ballarat Regional Soccer Facility

Pleasant Street, Ballarat 3350

The Ballarat Regional Soccer and Events Facility is Ballarat's newest, freshest and most exciting events venue, perfect for your next private or corporate function.

The recently constructed Ballarat Regional Soccer and Events Facility features sweeping views of the region's newest, world-class sporting facility with views of Ballarat's stunning landscape in the background. This freshly cut view will impress you and your guests on every occasion.

Being able to cater to a large range of events to meet your requirements is our game. Every event is planned to your requirements and budget in mind. With commercial standard facilities also available in our onsite kitchen we have the option to suit, when catering for your next event. We strive to create an enjoyable and pleasant experience for all at the Ballarat Regional Soccer and Events Facility.

☎ (03) 5320 5500 ✉ brsffunctions@ballarat.vic.gov.au



Black Hill Reserve

746 Chisholm Street, Black Hill 3350

The Black Hill Reserve includes the Black Hill lookout, offering sweeping views of Ballarat and the surrounding district to the south.

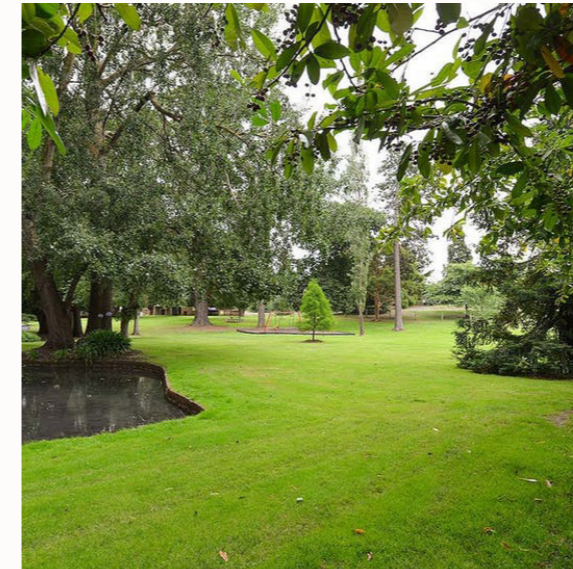
The reserve has also become a focal point of downhill mountain bike riding in Ballarat.

Six cross country trails, four downhill trails, two pump tracks, skills area and advanced jump park are open for use.

Features include a scenic lookout and a mountain bike course

☎ (03) 5320 5500

↗ 210,000m²



Buninyong Botanic Gardens

Corner of Scott and Inglis Streets, Buninyong 3357

The Buninyong Botanical Gardens are a popular venue for social gatherings and activities in the heart of Buninyong.

Facilities include playground equipment and electric barbecues and the upper garden area is home to many fish and waterbirds.

Established in the 1860s and designed by the Director of the Royal Botanic Gardens Melbourne Baron Ferdinand von Mueller, the Gardens are among the oldest in Victoria.

Features:

- Heritage listed Botanic Gardens, established in the 1860s
- Public toilets
- BBQs
- Playground
- Water feature the Gong

☎ (03) 5320 5193

↗ 44,000m²



City Oval

Cnr Mair & Pleasant Streets, Ballarat 3350

One of Ballarat's most significant sporting venues and important outdoor heritage sites, the City Oval and its historic grandstand (1887), is an impressive venue for a range of events.

City Oval is now home to the annual Run Ballarat and has hosted the Ballarat Beer Festival, highlighting its capacity to host up to 8,000 people in one location.

Located at the top of Sturt Street, in the centre of town and a block from Lake Wendouree, City Oval is accessible, offers good quality facilities in a historic and tree lined setting.

Primary uses: Suitable for sporting events, training and team building outdoor sessions, family friendly events.

☎ (03) 5320 5701

↗ 50,000m²





Eastern Oval

Peel Street North x Ebden Street x Scott's Parade

The Historic Eastern Oval is located in Peel Street North and borders Ebden Street and Scott's Parade; its central location is perfect for a host of major events as it is within walking distance to many of the City of Ballarats significant points of interest, Bridge Mall Shopping Centre, Ballarat Railway Station, Art Gallery of Ballarat, Her Majesty's Theatre, Ballarat Mining Exchange, Ballarat Public Library and the Ballarat Town Hall to mention just a few.

The Eastern Oval is one of the City of Ballarats Main Ovals that has been used quite extensively especially during the drought conditions that the state experienced, most recently in seasons 2007, 2008 & 2009 it hosted over 280 games of football and netball, this is a staggering amount of foot traffic for the ground but it has stood the test of time.

↗ 45,000m²



De Soza Park

Next to Midland Hwy in Buninyong, 3357

De Soza Park runs along Union Jack Creek in central Buninyong, with walking tracks on both sides of the creek.

Near the Warrenheip Street entrance there is a playground, a toilet block at the rear of the rotunda, a barbecue and picnic tables. A stage is regularly used for special events.

The park includes several points of local historical significance, including the sites of the Old Crown Mine and former tannery.

Features

- Public toilets
- BBQs
- Playgrounds
- Walking track



Eureka Stockade Gardens

102 Stawell St S, Ballarat Victoria 3350

The Eureka Stockade Gardens are National Heritage Listed for their association with the Eureka Stockade Rebellion of 3 December 1854.

The gardens are located next to the Eureka Centre, Home of the Eureka Flag and Eureka Aquatic Centre.

Features

- Heritage listed, commemorative site Eureka rebellion
- Public toilets
- Playground
- Picnic shelters, BBQs
- Eureka Centre

☎ (03) 5320 5193

↗ 40,000m²



Lake Esmond

Larler Street, Golden Point 3350

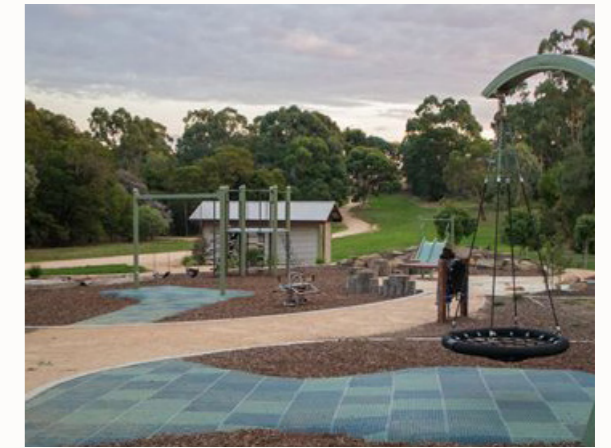
Originally a quarry for the local Eureka Tile Works until 1982, Lake Esmond was replanted and revived as a lake and reserve.

A large area of surrounding parkland includes an adventure playground, walking track BBQs and toilets, treed areas and open space.

The lake was named after early gold discoverer and Eureka Stockade leader, James Esmond.

Features

- Public toilets
- BBQs
- Playgrounds
- Water feature





Lake Wendouree

Ballarat Botanical Gardens, Ballarat 3353

Located in central Ballarat next to the Ballarat Botanical Gardens and near Victoria Park, Lake Wendouree offers a wide range of attractions and recreational activities.

The lake offers opportunities for fishing, sailing and rowing. The world-class 2000 metre rowing course hosted rowing events at the 1956 Melbourne Olympic Games and remains a venue for school, club and high-level rowing and sailing competitions.

Primary uses: rowing, sailing, fishing

☎ (03) 5320 7444 ✉ operationsadmin@ballarat.vic.gov.au

👉 www.ballarat.vic.gov.au/lakewendouree

📏 238,000m²



Lake Wendouree Foreshore

Lake Wendouree, 3350

Lake Wendouree has been a community destination for the more than 150 years.

Located in central Ballarat next to the Ballarat Botanical Gardens and near Victoria Park, Lake Wendouree offers a wide range of attractions and recreational activities both on and off the water.

Facilities include the six-kilometre Steve Moneghetti running and walking track, cycling trails, playgrounds and excellent picnic and BBQ facilities. The lake offers opportunities for fishing, sailing and rowing. The world-class 2000 metre rowing course hosted rowing events at the 1956 Melbourne Olympic Games and remains a venue for school, club and high-level rowing and sailing competitions.

Features

- Public toilets
- BBQS
- Playgrounds
- Restaurants
- Water pursuits INC. fishing
- Rowing Course
- 6km Walking Track
- Home of rowing 1956 Olympics

☎ (03) 5320 5193

📏 60,000m²



Victoria Park

Cnr Sturt & Russell Streets, Ballarat 3350

Contact: Customer Service

Victoria Park is one of Ballarat's most outstanding outdoor spaces. Featuring 130 hectares of active and passive recreation parkland, it has long been a popular event space.

It has 13 ovals with 10 cricket wickets, as well as ample open space. Noise management: Venue subject to EPA requirements and notification letters are required to be sent to nearby

residents. City of Ballarat will require a Noise Management plan as part of the Event Permit application process.

Ground sensitivity: Higher level of ground protection required on the sporting oval than in the park lands, no pegging policy across City of Ballarat managed lands

☎ (03) 5320 7441 ✉ operationsadmin@ballarat.vic.gov.au

👉 www.ballarat.vic.gov.au

📏 50,000m²



Mars Stadium

725 Creswick Road, Wendouree 3355

Mars Stadium is Ballarat's premier outdoor sports and events facility located on Creswick Road at Wendouree. Primarily to cater for Australian Rules Football and is the home of the North Ballarat Football Club (VFL) and the Greater Western Victoria Rebels (TAC).

The stadium is only a short distance to the Western freeway offering easy access to Melbourne and Western Victoria. The Victorian Government funded a \$31.5 million upgrade to the stadium and the wider Ballarat major events precinct (with approximately half of the funding going to the first stage of the redevelopment of Eureka Stadium).

Current capacity: 11,000





Art Gallery of Ballarat

40 Lydiard Street Nth, Ballarat 3350

The Art Gallery of Ballarat is Australia's premier regional art gallery and the perfect venue for a range of events.

As well as the contemporary hall, for larger gatherings and dinners, some exhibition galleries are available for wedding services, smaller cocktail parties and receptions.

The McCain Hall is the Gallery's main function area and can accommodate up to 255 guests for a standing function or 150 seated. It has a crisp contemporary design, with white walls and bluestone floor and includes the Annexe, a light and airy space overlooking Alfred Deakin Place and the Camp Street Arts Precinct.

The Function Hall and Annexe can be used as separate spaces or opened out into a large function room.

There are a range of spaces available in the exhibition halls upstairs, providing opportunities to host select events surrounded by masterpieces of Australian art.

The Gallery has facilities for talks and presentations, including a powered lectern, plasma screen, and internet access. The Gallery has an on-site commercial kitchen which can be made available to approved caterers.

☎ (03) 5320 5858 ✉ artgal@ballarat.vic.gov.au
 📍 www.artgalleryofballarat.com.au



Ballarat & District Trotting Club

Bell Street, Redan 3350

The Ballarat & District Trotting Club Inc. (BDTC) is ideally positioned only a few minutes drive from Ballarat's main street. The club is a leisurely 90 minute drive from Melbourne and our outstanding facilities are sure to impress.

The BDTC has over 230,000 people attend the venue throughout the year. They host 35 country harness race meetings over the racing year. Many local community groups utilise the fundraising nights alongside the club's racing calendar, and businesses also utilise the venue for corporate functions, business meetings and to entertain their staff and suppliers.

The function team at BDTC are committed to making your event nothing but perfect, with three different function rooms, whatever the size or type of event our function and catering teams are always at your service. We offer menu packages to suit all needs from sit down dinners, canapés, platters and all-day conference menus; we are bound to have something to fit your style of event

☎ (03) 5335 9041 ✉ admin@ballarattrottingclub.com.au
 📍 www.ballarattrottingclub.com.au



Ballarat Mechanics' Institute

117-119 Sturt Street, Ballarat 3350

Part of the historical and cultural heart of Ballarat CBD.

Established in 1859, and independently run, membership to the BMI gives access to our lending library and heritage books and archives, and discounts on events and hire.

All are welcome to visit for tours, cultural events and exhibitions, and to hire our unique function rooms. With the addition of a new finishing kitchen, the BMI is a special venue for holding celebrations, weddings, conferences and performances.

Ballarat Mechanics' Institute (BMI) has welcomed a diverse group of people through its doors, from the founding fathers, to miners and others seeking knowledge through education.

Since 1859, the BMI has been used for balls, lectures, markets, cinema, library, concerts and cultural events. Following a magnificent restoration in 2013, the BMI continues its significant role in Ballarat's rich cultural heritage

☎ (03) 5331 3042 ✉ venue@ballaratmi.org.au 📍 ballaratmi.org.au



Kryal Castle

121 Forbes Road, Leigh Creek, Ballarat 3352

At Australia's only medieval adventure park one hour from Melbourne, be hosted in unforgettable regal style for your function, special event or conference.

Use this incredible Castle, its grounds and function spaces as an enchanting and unique backdrop. Set on the side of Mt Warrenheip, take in the beautiful views from the Castle grounds over Ballarat and the surrounding countryside.

Kryal Castle's function rooms can cater for small and intimate events through to the grand.

Kryal Castle's dedicated team can create and customise your event to match your every need to celebrate in medieval style...

☎ (03) 5334 8500 ✉ admin@kryalcastle.com.au
 📍 www.kryalcastle.com.au





Mercure Ballarat Hotel and Convention Centre

613 Main Road, Ballarat 3350

Just over one hour from Melbourne CBD, Tullamarine and Avalon Airports and 90 mins from Bendigo, the Mercure Ballarat is one of regional Victoria's largest conference venues, offering wellappointed, spacious accommodation (97 rooms including nine two-bedroom apartments), a purpose designed convention centre, versatile meeting facilities, restaurant, bar and day spa all located

within the property's three hectare retreat style garden setting.

The property is locally owned and operated, and staffed with an experienced team of hospitality professionals who have come to call Ballarat and surrounds home.

Mercure Ballarat is located opposite award winning Sovereign Hill, the region's major tourist attraction and central to the heart of the historic gold fields. Mercure Ballarat is the perfect location to hold a major symposium, small meeting or truly memorable occasion. Our experienced team will ensure your next event is a complete success.

Choose from a variety of versatile function and conference spaces with the capacity to cater for a small meeting of 20 delegates, a plenary for 440 delegates, banquet dinner for 600 guests or a networking event for 1000.

The venue's features include conference break-out rooms and pre-function areas, complemented by state-of-the-art audio visual facilities and in-house support, picturesque surroundings and natural light. The immaculate gardens and extensive decking overlooking the lake at the rear of the hotel also make this a splendid location for post meeting functions, weddings and celebratory events.

(03) 5327 1200 conferences@mercureballarat.com.au
www.meetinballarat.com.au



Narmbool

440 Horsehill Road, Elaine 3334

Narmbool is Sovereign Hill's beautiful pastoral property at Elaine, just 30 minutes from Ballarat or 90 minutes from Melbourne. Set across 2,000 hectares, with a magnificent garden and onsite accommodation, Narmbool is perfect for executive retreats, conferences, planning days, fine dining and functions.

The Garden Room and its terrace offer an elegant location for special dining experiences including functions, formal dinners and garden parties. This self-contained, fully-licensed restaurant can also be used for conferences.

Narmbool Lodge accommodation overlooks Williamsons Creek and its picturesque valley. Guests to the Lodge enjoy superb views across pasture and wetlands, and further upwards to Narmbool's bush conservation areas.

The Lodge is a contemporary venue that has been developed for the boutique group and conference market. Designed in harmony with its natural surrounds, Narmbool Lodge has 16 accommodation rooms with ensuite facilities, each with commanding views.

Conduct your next event at Narmbool in a truly peaceful and tranquil environment.

(03) 5337 1100 functions@sovereignhill.com.au
www.sovereignhill.com.au



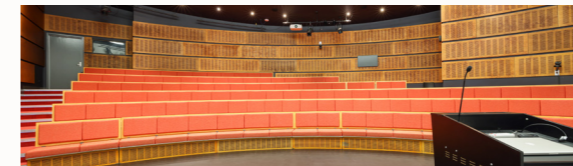
Eureka Centre

102 Stawell Street Sth, Ballarat 3350

Located five minutes from the Ballarat CBD, with ample parking, the Eureka Centre is a fully contained venue hire facility. The Eureka Centre is located in the grounds of the historical Eureka Stockade Memorial Park and is home to the famous Eureka Flag.

The venue hire experience at the Eureka Centre is centred around the Auditorium. This impressive, fully accessible conference venue seats 114 people. It is a formal yet intimate environment well suited to meetings, lectures, forums, film screenings, performances or policy, book or product launches. In addition, to the Auditorium break out spaces can also be including in your booking.

(03) 5333 0333 www.eurekacentreballarat.com.au



Wendouree Performing Arts Centre

1220 Howitt Street, Wendouree, Ballarat Victoria 3355

The Wendouree Centre for Performing Arts has an auditorium, a foyer each side and a Music School for students at the rear of the building. The Centre boasts an acoustically superior auditorium, stalls and two balconies with a total of 857 seats. A unique feature of the auditorium is the 'pivoting' proscenium. There are two large sides on the proscenium, which are pivoted so they can turn 90 degrees. They turn inwards to make for a wide stage area for say a symphony orchestra or outwards to provide a narrower looking stage for solo performances. There is a wide 170 square metre stage which can be extended out by another 60 square metres. There is no fly tower, hence no fly downs which is complimentary to the health and safety requirements for school students. The stage is at street level providing direct access to vehicles to unload sets and equipment closely to the stage. The dressing rooms located under the stage have pivoting walls, which provide the versatility to become two, three or four smaller dressing rooms.

03 5338 0980 wcpa@bgs.vic.edu.au wcpa.com.au





RACV Goldfields Resort

1500 Midland Highway, Creswick 3363

As one of the largest accommodation venues in regional Victoria, RACV Goldfields Resort is the ideal venue for conferences and events.

The resort is located just 90 minutes from the Melbourne CBD and Melbourne Airport. Set on 150 acres of state forest and a beautiful 18-hole championship golf course in the heart of the Goldfields, the resort offers the perfect balance of recreation,

business and entertainment. The resort has a full range of facilities to accommodate guests including; a restaurant and bar, extensive meeting rooms and function rooms, tennis courts, gymnasium, heated outdoor swimming pool and spa, mountain bike tracks.

All 131 accommodation rooms offer a king sized bed, spas and balconies with stunning views of the pool, golf course

and surrounding Creswick State Forest. With a dedicated team that will help you create your next successful conference

or event, RACV Goldfields Resort is the perfect venue for an event or conference with a difference.

☎ (03) 5345 9600 ✉ event_goldfields@racv.com.au
 📍 www.racv.com.au/venues



Sovereign Hill

Bradshaw Street, Ballarat 3350

An internationally acclaimed tourist attraction, Sovereign Hill brings to life the colour and excitement of Australia's 1850s Gold Rush providing a full day's entertainment with hands-on experiences. It's just like stepping back in time to goldrush Ballarat – from Main Street where costumed ladies and gents parade their new-found wealth, to the excitement of the diggings where visitors pan for real gold and it's 'finders keepers!' There's an underground mine, street theatre and the opportunity to be photographed with costumed goldfields characters. See a spectacular \$150,000 gold pour and chat with the blacksmiths, candlemakers and confectioners who make souvenirs onsite.

☎ (03) 5337 1100 ✉ enquiries@sovereignhill.com.au
 📍 www.sovereignhill.com.au



Volta

15 Field Street, Ballarat, VIC, 3350

Volta is Ballarat's premiere live music venue, showcasing diverse talent from local and touring acts. Opened early February 2020 and located just a few hundred metres from the Ballarat train station, Volta is a venue that heroes live music and all live creative performance. Revamping an iconic music venue and continuing its legacy of supporting the local music scene, as well as bringing the best live acts that Australia has to offer.

You can expect an open, safe, dynamic and engaging atmosphere, a diverse array of drinks, and moving tap beer options.

Volta is a place to socialise and engage, whilst presenting an array of diverse acts, events and people.

☎ +61 466 302 189 ✉ manager@voltaballarat.com.au
 📍 www.voltaballarat.com.au

The Ballarat Mining Exchange

12 Lydiard Street Nth, Ballarat 3350

**Bookings can be made via: Her Majesty's Theatre
 17 Lydiard Street Sth, Ballarat 3350**

The Ballarat Mining Exchange was built between 1887-9, and was used for trading of shares in mining companies during the Gold Rush era. It still houses the Mining Exchange Gold Shop today.

The Mining Exchange underwent a major refurbishment and still retains many of the heritage features which make it an appealing venue for a wide range of events.

The venue is also suitable for corporate and private functions such as fashion parades, wine exhibitions, product launches, weddings, cocktail parties, exhibitions, markets and fundraising events.

The Mining Exchange has many unique features to make any occasion memorable including a seating bank of 130 seats which can be configured to suit any event, eighteen alcoves which can be utilized for any occasion, a fully equipped commercial kitchen and slab floor heating set to 21C.

The venue also has a smaller more intimate room for smaller functions and corporate meetings. This room is carpeted and has electric wall heating.

Off street parking is available.

☎ (03) 5333 5888 ✉ hermaj@hermaj.com 📍 hermaj.com





Ballarat Turf Club

240 Kennedys Road, Miners Rest 3352

The Ballarat Turf Club hosts their main event – the Sportsbet Ballarat Cup on the last Saturday of the Spring

Racing Carnival each November. In addition to this major race day there are 26 other race meetings conducted

throughout the year. Bookings can be made at any of the race meetings in a selection of areas including the Terrace Dining Room, Corporate Boxes or Mini Marquees.

The Ballarat Turf Club also has a number of function areas available for non racing events including three separate conference rooms

which can cater for sit down dining for up to 300 patrons. There is a large undercover area on the ground floor which can be converted to a multipurpose area suitable for team building activities, expos, displays or other promotional activities.

☎ (03) 5334 6273 ✉ info@ballaratturfclub.com.au
📍 www.ballaratturfclub.com.au



The Goods Shed

Lydiard Street North cnr. Nolan Street

An exciting new venue for all of Ballarat's cultural, corporate and social events, The Goods Shed's multi-purpose facilities include a 240-person event space, a theatre, multiple meeting rooms and an outdoor plaza. These unique and beautiful spaces are catered to by Atlantic Group, the hospitality house with a tenacious reputation for creating extraordinary experiences and delivering exceptional service.

The Goods Shed has a range of superb event spaces, perfect for corporate functions, social gatherings, conferencing and working meetings.

☎ +61 (3) 8623 9600 ✉ info@atlanticgroup.com.au
📍 thegoodshedballarat.com.au



Ballarat Sports Event Centre

989 Norman Street, Wendouree Victoria, 3550

The Ballarat Sports Events Centre is one of the largest sporting facilities in the region.

The new indoor arena, which features a striking modern design, forms part of the Eureka Sports Precinct.

The upgrades have significantly changed the indoor sporting experience in Ballarat, particularly through the inclusion of a new 3000-seat show court and additional courts capable of hosting a range of events including netball, basketball, volleyball and badminton.

New amenities and facilities – including female-friendly changerooms and an adult changing facility – ensure the new Sports and Events Centre is home to the region's elite sporting teams, as well as many community teams.

☎ (03) 5338 1220
📍 www.ballarat.vic.gov.au/ballaratsports-events-centre

Her Majesty's Theatre

17 Lydiard Street South, Ballarat Central 3350

Her Majesty's Theatre Ballarat is truly a jewel in the Australian cultural landscape and a Ballarat icon.

Opening in 1875 in the heart of the City, the theatre is renowned for its Victorian architecture and for being the chosen venue for some of the world's most recognised performers.

Her Majesty's Ballarat is the region's premier purpose-built professional theatre showcasing international, national, state and local professional and amateur live productions. Away from the stage, additional spaces are used for cocktail parties, corporate functions/launches, fundraising events, meetings, media calls, and interviews.

The historic and iconic theatre provides the following features:

- The Auditorium: 816 pax theatre seating across three levels
- A raked stage
- 10 dressing rooms
- The Long Room Theatre Bar: 120 pax cocktail style
- Front of House disabled access to the Box Office, lift access to the Stalls and accessible toilets
- A quick walk away from the train station and accommodation

Known for its successful delivery of all events and an average audience of 75,000 patrons per year, the venue is supported by a professional team. Their technical, ticketing, marketing, and event expertise will help you bring your event to life with a high degree of professionalism and proficiency.

Since 1965 the Royal South Street Competitions have called the Theatre home and occupy the building between mid-August and early November every year. Both Dance and Calisthenics which are key components of the annual Eisteddfod are classified as sporting disciplines

☎ 03 5333 5888 ✉ hermaj@hermaj.com 📍 www.hermaj.com



Civic Hall

300/304 Mair Street, Ballarat Central VIC 3350

Ballarat's Civic Hall has re-emerged as one of the city's most popular and adaptable event spaces.

Following a major renovation in 2019, the Ballarat Civic Hall hosts an annual season of diverse, entertaining and world-class events and performances for local, regional, national and international organisations.

The venue is an inviting space for audiences, performers, stall holders and conference delegates, offering one of the largest flat floor auditoriums in regional Victoria. The design allows flexibility and the capacity to host multiple events each day, including small meetings to full theatrical performances and gala events.

An integral part of Ballarat's arts precinct, the Ballarat Civic Hall is conveniently located close to the Art Gallery of Ballarat and Her Majesty's Theatre, the Ballarat Railway Station and a 300-space car park just 400 metres away on Creswick Road. The Ballarat Civic Hall is managed by the City of Ballarat.

☎ (03) 5333 5888 ✉ hermaj@hermaj.com
📍 www.ballarat.com.au/venue/civic-hall



1350



Federation University

University Drive, Mt Helen, Ballarat 3353

Federation University's Stay Meet Learn offers you a tailored, flexible approach for groups of any size. Value

and convenience without the fuss. Let us help you plan and successfully run your next event!

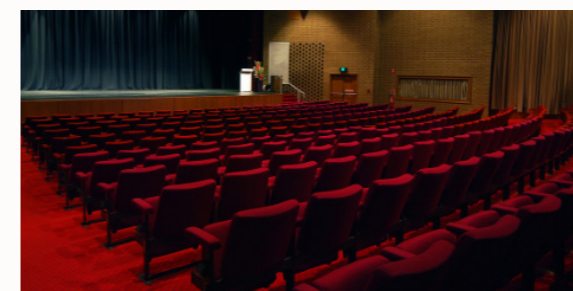
An extensive network of lecture theatres, computer facilities, meeting and breakout rooms are available suitable for use by groups of any size.

The catering team offer a wide range of innovative, modern and creative solutions to suit all requirements including lunches, formal dinners, cocktail events. Our tailored and flexible approach will have an option to suit your function requirements.

- Multiple campus locations – Ballarat, Gippsland and Berwick
- Accommodation options available for groups of any size
- Planning and management services
- Customised program development
- Speaker and session organisation
- Registration and ticketing management
- Session and event set-up
- Recreation, sporting and fitness facilities available for use
- and so much more

Contact us today to discuss your next conference or event.

☎ (03) 5327 9480 ✉ hospitalityandevents@federation.edu.au
📍 www.federation.edu.au/conferences





Get in touch

www.ballarat.com.au/events