

WADAWURRUNG AND DJA DJA WURRUNG COUNTRY

BALLARAT

BUSINESS EVENTS PLANNING GUIDE



WELCOME TO BALLARAT

The City of Ballarat acknowledges the Traditional Owners of our land, the Wadawurrung and Dja Dja Wurrung People. Within our council boundaries, the Wadawurrung People are the Traditional Owners south of the Great Dividing Range and, to the north, the Dja Dja Wurrung People are the Traditional Owners. We recognise their continuing connection to the land and waterways. We pay our respects to their respective Elders past, present and emerging and extend this to all Aboriginal and Torres Strait Islander People.



IMAGE: TARA MOORE

BALLARAT has a proven and successful track record of hosting international, national and state conferences and events. Long-defined as being at the heart of Australia's goldfields, history and heritage remain among its strongest drawcards. But the city is perpetually showcasing those products and experiences that synonymise Ballarat not only with gold, but with an array of contemporary and diverse offerings, making the city an ideal year-round option for events of all kinds.

Ballarat is an inherently creative and innovative city, which is celebrated through its recognition as a UNESCO Creative City for Craft and Folk Art. It is a city built on a rich past, from its strong First Nations culture, to a 19th century global rush for gold, to a 20th century exploration of its own story and narrative. The city is a melting pot of diverse traditional skills in a highly intact historic city. Coupled with heritage and culture focus, the venues and gathering places on offer provide a unique experience to all involved.



CONTENTS

Our region	2
Welcome to Ballarat	6
Ballarat venues & accommodation	7
Attractions	26
Transport	30
Explore the surrounding region	32
Quick reference guide	33
Ballarat & surrounds Map	34

SUPPLIED: SOVEREIGN HILL



IMAGE: MATT DUNNE

LOCATION & ACCESS

Situated just over an hour west of Melbourne, Ballarat's close proximity to the city makes it one of Victoria's most appealing events destinations. With the train station located in the centre of the city and with regular train and coach services, it truly is a convenient and premium option for business events.

Ballarat is a one-hour drive from Victoria's two major international airports, Melbourne Airport and Geelong's Avalon Airport. Daily shuttle bus services run between Ballarat and the Melbourne Airport.

Travel time by car from major cities:

Melbourne	75 minutes
Warrnambool	2 hours
Geelong	60 minutes
Traralgon	3 hours
Mildura	4 hours
Bendigo	90 minutes
Adelaide	6 hours
Sydney	11 hours





40 Lydiard Street North, Ballarat
 (03) 5320 5858
 artgal@ballarat.vic.gov.au
 www.artgalleryofballarat.com.au

Room name	Area m ²	Theatre	Caberet	Banquet	Cocktail
McCain Hall	155	150	60	100	155
McCain Annexe	100	80	40	60	100
Oddie Gallery	180	120	50	80	120
Boardroom	25	-	-	-	14

ART GALLERY OF BALLARAT

The Art Gallery of Ballarat is the oldest regional gallery in Australia and one of the most welcoming and engaging. Located in the heart of Ballarat, it embodies the city's rich history and vibrant contemporary experiences.

The Art Gallery of Ballarat is the perfect venue for a range of events from, business meetings to private functions. As well as a contemporary hall for larger gatherings, some exhibition galleries are available for wedding services and receptions.

The McCain Hall is the gallery's main function area and can accommodate up to 255 guests for a standing function or 150 seated. It has a crisp contemporary design, with white walls and bluestone floor and includes the Annexe - a light and airy space overlooking Alfred Deakin Place and the Camp Street arts precinct. The McCain Hall and Annexe can be used as separate spaces or opened to form a larger function room.

There are a range of spaces also available in the exhibition galleries, providing opportunities to host select events surrounded by masterpieces of Australian art. The gallery has facilities for talks and presentations, including a lectern, plasma screen and internet access. An on-site commercial kitchen can be made available to approved caterers.



315-317 Mair Street, Ballarat
 (03) 5300 1407
 info@auntyjacks.com.au
 www.auntyjacks.com.au

Room name	Area m ²	Theatre	Caberet	Banquet	Cocktail
Brewhouse	180	60	60	60	120
Brewdeck	80	60	30	110	120
Messanine	60	20	30	30	40
Main Bar	60	30	30	30	60

AUNTY JACKS

Aunty Jacks is a brewpub that brews its own award-winning beer on site. The venue can hold up to 400 people, with multiple spaces available to cater for a variety of functions and events.

The venue has an extensive menu of housemade specialities, multiple bars and an eclectic decor of upcycled features. Aunty Jacks can host your next event, including offering corporate training and team building workshops to suit any workplace.



Bell Street, Redan
 (03) 5335 9041
 admin@ballarattrottingclub.com.au
 www.ballarattrottingclub.com.au

Room name	Area m ²	Theatre	Banquet	Cocktail
Main Function Room	390	600	550	1000
Committee Room	-	50-80	110	120
Draught Room	-	-	-	120

BALLARAT AND DISTRICT TROTTHING CLUB

The Ballarat & District Trotting Club (BDTC) is ideally positioned only a few minutes' drive from Ballarat's CBD. The club is a leisurely 90-minute drive from Melbourne and their outstanding facilities are sure to impress.

The BDTC has more than 230,000 people attend the venue throughout the year and host 35 country harness race meetings over the racing calendar. Many local community groups utilise the venue for fundraising events, with businesses also hosting corporate functions and meetings.

The team at BDTC is committed to making your event perfect, no matter the size or type of event or function. A selection of curated menu packages are also available, including sit-down dining, canapes, platters and all-day conference-style menus.



1800 Sturt Street, Ballarat
 (03) 5338 3000
 functions@ballaratgolfclub.com.au
 www.ballaratgolfclub.com.au

BALLARAT GOLF CLUB

The Ballarat Golf Club has quickly become one of Ballarat's most popular venues. The club's modern facilities, matched with award-winning service, positions the club as the first choice for many businesses planning events.

The club is easily accessible and located only minutes from the Ballarat CBD. Extensive onsite parking is an added convenience for you, your guests and clients.

With a range of function spaces and rooms available, the club can cater for intimate meetings to large corporate events.

The Ballarat Golf Club is an 18 hole championship course that can be set up to cater for golfers of all levels. The award-winning course continually ranks in top 100 lists and paired with outstanding hospitality, it really is the perfect venue for any event. The club has hosted national and international golf events and can take care of every detail for a memorable day of golf and socialising.

Room name	Area m ²	Classroom	Theatre	Board Seated	Dinner	U-Shape	Cocktail
Hoskin Room	40	-	25	18	18	-	25
Titheridge Room	131	40	90	-	80	24	100
Main Function Room	220	-	150	-	160	-	200
Titheridge & Main Function Rooms	351	-	-	-	220	-	300
Open Function Room	512	-	-	-	320	-	350



BALLARAT GREYHOUND RACING CLUB

The club's Ballarat Function Centre is located just 4kms from the heart of the Ballarat CBD and offers you a unique event experience. Located on the ground floor, it provides easy access to all patrons, in addition to free car parking to accommodate large crowds.

The venue sets the scene for what can be offered for your next event. The venue is multifunctional and can be tailored to suit a variety of functions, from weddings, sports presentation nights, fundraisers and small executive meetings, to large scale conferences and trade shows.

Their knowledgeable kitchen team has a wealth of experience and focus on delivering modern and fresh cuisine for functions of all sizes, from cocktail party-style finger food to fully-serviced sit-down banquets. Food and wine is sourced from producers across the Ballarat region.

Racing takes place on Monday and Wednesday evenings, which always provides a great back drop to any social event or fundraiser.

Corner of Rubicon & Sutton Streets, Ballarat
 (03) 5335 7201
ballarat@grv.org.au
www.ballarat.grv.org.au

Room name	Theatre	Banquet	Cocktail
Main Area	500	300	800



BALLAARAT MECHANICS' INSTITUTE

The Ballaarat Mechanics' Institute (BMI) sits proudly under the watchful eye of Minerva, the Roman goddess of arts, poetry, and wisdom. Since 1859, the BMI has been engrained in the Ballarat community and is used to host anything from dances and dinners, to movie screenings and music events.

The BMI offers an exciting and versatile suite of spaces that can be hired for a wide range of occasions.

The Humffray Room is a beautiful, medium size, ballroom complete with a small dance floor and bar area. It is great for larger meetings, small music concerts, wedding ceremonies, and cocktail functions. This room houses a 1913 C Bechstein Grand Piano and it also has a balcony with views across Sturt Street.

The Minerva Space is a large flat floor grand hall complete with a proscenium arch theatre with a tiered stage and professional lighting, audio, and projection system. It is perfect for performances and live music, but is extremely versatile and can host events from sit-down dinners and wedding receptions to movie screenings and art exhibitions.

117-119 Sturt Street, Ballarat CBD
 03 5331 3042
venue@ballaratmi.org.au
www.ballaratmi.org.au

Room name	Theatre	Boardroom	Banquet	Caberet	Cocktail
Minerva Space	280	-	150	200	280
Humffray Room	80	25	50	30	100



BALLARAT REGIONAL SOCCER FACILITY

The Ballarat Regional Soccer Facility provides multi-purpose use, with it's functional design lending itself to an array of entertainment and business needs.

With elevated sweeping views over Ballarat and Mount Buninyong, and different function room options which can cater for up to 180 guests, this is the perfect place for your next professional or private event.

The function space can cater to your specific needs, and budget, and the modern commercial-standard kitchen facilities are able to host your preferred caterer on site.

There is abundant free parking onsite, free Wi-Fi, and a fully licensed bar. AV equipment includes a projector and large screen, seven TV screens and three separate HDMI connection point, as well as, wireless microphones. The space can also be configured to two separate spaces, and there is an external deck that can be fully enclosed.

900 Pleasant Street, Redan
0418 135 279
brsffunctionspace@ballarat.vic.gov.au
www.ballarat.vic.gov.au

Room name	Theatre	Banquet	Cocktail
Main Area	500	300	800



BALLARAT TURF CLUB

The Ballarat Turf Club hosts their main event, the Sportsbet Ballarat Cup, on the last Saturday of the Spring Racing Carnival each November. In addition to this major race day, there are 26 other race meetings conducted throughout the year.

Bookings can be made at any of the race meetings across a selection of areas, including the Terrace Dining Room, corporate boxes or mini marquees.

The Ballarat Turf Club also has a number of function areas available for non-racing events, including three separate conference rooms which can cater for sit-down dining for up to 300 patrons. There is a large undercover area on the ground floor which can be converted to a multipurpose area suitable for team building activities, expos, displays or other promotional activities.

240 Kennedys Road, Miners Rest
(03) 5334 6273
info@ballaratturfclub.com.au
www.ballaratturfclub.com.au

Room Name	Theatre	Banquet	Cocktail
Terrace Dining Room	250	330	450
Committee Room	160	130	200
Skills Dining Room	230	220	280
The Tea House	20	-	60



27A Lake Wendouree Foreshore
 (03) 5333 5533
 dine@boatshedrestaurant.com.au
 www.boatshedrestaurant.com.au

Room name	Banquet	Cocktail
Back deck	50	70
Entire restaurant	120	150

BOATSHED RESTAURANT

The Boatshed Restaurant is located on the Lake Wendouree foreshore in the very heart of Ballarat.

This iconic restaurant has been a popular location for locals and visitors for almost two decades. In more recent years, the restaurant was refurbished and relaunched for its next phase.

Boasting uninterrupted views of Ballarat's beautiful Lake Wendouree, the Boatshed Restaurant offers a unique space for any event or function. The fully enclosed back deck can to be closed off, offering a private area for seated groups of up to 50 people. The entire restaurant seats 120 people. Various catering packages are available, ranging from canapés to three course plated sit-down menus. Choose from their supplied function menus or opt for a specifically curated menu for your event.

Open from breakfast until late, the Boatshed Restaurant is perfect destination for a breakfast conference or corporate dinners. Corporate catering is also available for delivery in Ballarat.



300-304 Mair Street, Ballarat CBD
 (03) 5333 5888
 jhall@hermaj.com
 www.ballarat.vic.gov.au

Room name	Theatre	Banquet	Cocktail
Main Area	1,050	500	1,350

CIVIC HALL

Ballarat's Civic Hall has re-emerged as one of the city's most popular and adaptable event spaces.

Following a major renovation in 2019, the Ballarat Civic Hall hosts an annual season of diverse, entertaining and world-class events and performances for local, regional, national and international organisations.

The venue is an inviting space for audiences, performers, stall holders and conference delegates, offering one of the largest flat floor auditoriums in regional Victoria. The design allows flexibility and the capacity to host multiple events each day, including small meetings to full theatrical performances and gala events.

An integral part of Ballarat's arts precinct, the Ballarat Civic Hall is conveniently located close to the Art Gallery of Ballarat and Her Majesty's Theatre, the Ballarat Railway Station and a 300-space car park just 400 metres away on Creswick Road. The Ballarat Civic Hall is managed by the City of Ballarat.



CRAIG'S ROYAL HOTEL

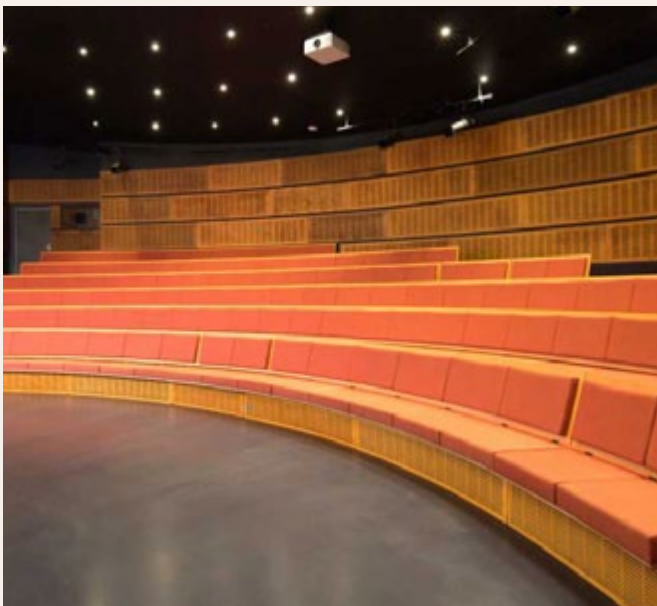
For more than 150 years, Craig's Royal Hotel has been host to confidential board meetings, boards of inquiry, state functions and major corporate announcements. As one of early Victoria's most renowned hotels, Craig's Royal Hotel is again the destination that adds value to any important gathering – whether a meeting for 10 or a presentation for 150 guests.



Located on historic Lydiard Street in the heart of Ballarat, Craig's Royal Hotel is a legendary Australian gold rush-era grand hotel. Built in 1862 on the site of Bath's Hotel – Ballarat's first official licensed pub – this hotel has hosted the likes of Prince Alfred, the Duke of Edinburgh, and Dame Nellie Melba, who famously sang from the balcony in 1908. Recognised as one of regional Australia's most prestigious wedding venues, Craig's Royal Hotel is the perfect combination of historic charm, tradition and innovation. More than six years restoration and refitting works have created a venue, unmatched in the region.

10 Lydiard Street Sth, Ballarat
 (03) 5331 1377
 functions@craigroyal.com.au
 www.craigroyal.com.au

Room Name	Theatre	Board Room	Banquet	Classroom	Cocktail	Caberet
Grand Dining Room	150	42	110	-	200	60-80
Prince's Room	50	30	50	25	80	35
Reading Room	40	26	40	-	120	24
The Bentley	50	30	40	-	80	24
The Cellar	-	28	-	-	40	-



EUREKA CENTRE

Home to the Eureka Flag, the Eureka Centre is an interactive space of Australian social and political history. Located on the historic site of the 1854 Eureka Stockade, the centre engages visitors in the compelling story of the Eureka Rebellion and the formation of democracy in Australia.

With views over the Eureka Stockade Memorial Gardens, the centre offers a unique venue for a range of special and corporate events. The 114-seat theatre includes AV, staging and lighting, suitable for film screenings, presentations and performances. The Democracy and Eureka meeting rooms cater for between 15 and 40 people and include whiteboards, flip charts and touchscreens. Our Tower Room and permanent exhibition space provide opportunities for distinctive special events. Wi-Fi is available in all rooms. The Eureka Centre provides well-priced quality catering to suit your needs, and their shop can supply a range of gift options for your guests. Guided tours of the Eureka story are available.

102 Stawell Street South, Ballarat
 (03) 5333 0333
 eurekainfo@ballarat.vic.gov.au
 www.eurekacentreballarat.com.au

Open everyday between 10am and 5pm, the venue is also available outside of these times for your next event.

Room name	Theatre
Theatre	114
Democracy meeting room	50
Eureka meeting room	50



FEDERATION UNIVERSITY

Set in lovely bushland surrounds, Federation University's campus offers a variety of flexible business event venues, including conference rooms, auditoriums, lecture theatres and well-appointed break-out rooms for up-to 660 people.

Their dedicated and friendly team is available to assist you with all aspects of planning, managing and running your event. They will work with you to curate a tailored package personalised to your preferences and budget, featuring fresh local produce and gourmet catering selections.

- Range of venue options available to suit groups of all sizes
- Comprehensive and flexible catering service
- Planning and management services
- On-campus print centre for all your printing requirements
- Accommodation options available
- Activities planning and preparation
- Speaker and session organisation
- Registration and ticketing management
- Session and event set-up
- Recreation, sporting and fitness facilities available for use
- Convenient, free parking just 12 minutes from the CBD

University Drive, Mt Helen, Ballarat
(03) 5327 9480
hospitalityandevents@federation.edu.au
www.federation.edu.au/conferences



27 Lydiard Street North, Ballarat
 (03) 5333 4866
 leah@georgehotelballarat.com.au
 www.georgehotelballarat.com.au

THE GEORGE HOTEL

The George Hotel offers an impressive central location, inviting event spaces, beautiful food and great service. The precinct has a variety of catering and package options to suit any event and a number of dining and entertainment spaces located within the venue.

The Lounge is the hotel's largest event space, offering an elegant setting for your upcoming business event - with standing and sit-down settings available. The Herring Room is another versatile room which has been refurbished, featuring a balcony overlooking historic Lydiard Street.

On the second floor, The Howe Boardroom is a private space for delegates of up to 12, with lift access.

The Lane Private Dining Room, situated adjacent to The Lane Restaurant, is the ideal room for small seated meeting and offers full catering and meeting packages.

Luxurious boutique accommodation is offered within The George Hotel, which is walking distance to entertainment and transport.

Room name	Classroom	Theatre	Cabaret	Board Room	Banquet	U-Shape	Cocktail
The Lounge	60	100	80	50	100	50	300
The Herring Room	30	60	24	30	40	30	150
Howie Boardroom	-	-	-	12	-	-	-
Private Dining Room	-	-	-	25	-	20	30



427 Sturt Street, Ballarat
 (03) 5331 6211
 info@goldencityhotel.com.au
 www.goldencityhotel.com.au

GOLDEN CITY HOTEL

The Golden City Hotel is situated in the heart of the Ballarat CBD. With sweeping views of the city and an established reputation, the Golden City Hotel can cater for your next group, club or business function. From birthday parties, to weddings, conferences and private dinners they can cater a package to suit your needs.

Ideal for groups of all sizes, the newly refurbished function rooms create a great atmosphere for any occasion. With professional staff and first class catering, a function here will be one to remember.

The two function rooms are fully equipped with modern décor for small or medium groups with all multimedia requirements catered for, including powerpoint facilities, internet access, electronic whiteboard and overhead projector. Coupled with delicious catering options, the Golden City Hotel is the ideal venue for all your function needs.

Room name	Classroom	Theatre	Board Room	Banquet	U-Shape	Cocktail
Adelphi Room	50	60	30	70	25	450
Zillies Room	50	60	30	50	30	200



THE GOODS SHED

The Goods Shed is a major redevelopment of the heritage listed goods shed adjacent to the Ballarat Railway Station, featuring remarkable event spaces including the Lydiard Hall, Terminus Theatre and Carriage Conference Rooms.

An exciting new venue for all of Ballarat's cultural, corporate and social events, The Goods Shed's multi-purpose facilities include a 240-person event space, multiple meeting rooms and a theatre. These unique and beautiful spaces will be catered to by Atlantic Group, the hospitality house with a tenacious reputation for creating extraordinary experiences and delivering exceptional service.

Lydiard Hall

This beautiful and historic space can seat up to 240 guests, or the space can be divided for smaller

gatherings. The room is rich with deep woods and stone, exposed beams and other unique heritage features, giving it a personality unique to the area.

Terminus Theatre

The theatre boasts a 308 seating capacity with a cinema sound system and beautiful interior design, perfect for local productions, film festivals, product launches or business seminars.

Carriage Conference Rooms

The Goods Shed has multiple meeting rooms, equipped with state-of-the-art sound, lighting and visual equipment. Atlantic Group will take care of your catering requirements with a hospitable host for the day on hand to greet you and your guests.

200 Lydiard Street North, Soldiers Hill
 (03) 8623 9600
 info@atlanticgroup.com.au
 www.thegoodshedballarat.com.au

Room name	Theatre	Board Room	Banquet	Classroom	U-Shape	Cocktail
Carriage Conference Rooms A/B/C	40					
Terminus Theatre	308	-	-	-	-	-
Lydiard Hall			240			



HOP TEMPLE

Hop Temple is Ballarat's most elusive bar, hidden down a laneway in the CBD. It is the place to eat, drink and socialise.

Hop Temple boasts one of the largest range of beers in Victoria, celebrating beer from local brewers, international innovators and, of course, your old favourites. Their beer list is complimented by great casual food and an extensive wine, spirits and cocktail list.

This popular venue features two private function areas, perfect for your next celebration, business meeting or get together.

24-28 Armstrong Street North, Ballarat
 (03) 5317 7158
info@hoptemple.com.au
www.hoptemple.com.au

Room name	Cocktail
The Loft & Lounge	120
The Loft (upstairs)	70
The Lounge (downstairs)	50



12 Armstrong Street North, Ballarat
 (03) 5337 6635
 events@theforgepizzeria.com
 www.houseyhousey.com.au

Room name	Area m ²	Theatre	Banquet	Cocktail
Housey Housey	333	200	250	300+
HH @ The Forge	-	-	70 - 120	-

HOUSEY HOUSEY

Housey Housey is the go-to venue for corporate celebrations, awards nights and gala dinners. Located in the heart of Ballarat, the timeless layout, high ceilings, exposed brick and warehouse-style guarantee a unique and fun experience for your guests.

Housey Housey hosts seated dining and cocktail-style events as well as more formal corporate conferences, in a large and flexible event space. Perfect for 120 guests, roomy enough for 250 people and suitable for functions of 70 or less, Housey Housey is a venue with a difference.

Venue features include four-meter ceilings, rustic open plan, 4m high ceilings, large multipurpose room, flexible exhibition and meeting space, disability access, award-winning food, car access for product launches, and ample nearby parking.

You will have access to free Wi-Fi, audio visual aids including a sound system, multiple projectors, special effects lighting and microphones.

Try something different for your next conference or corporate event.



121 Forbes Road, Leigh Creek
 (03) 5334 8500
 admin@kryalcastle.com.au
 www.kryalcastle.com.au

Room name	Classroom	Theatre	Banquet	U-Shape	Cocktail
The Abbey	100	100	120	80	250
Jesters Theatre	-	100	-	-	-
The Knights Round Table	-	-	30	-	50
The Chapel	-	120	-	-	-

KRYAL CASTLE

Be hosted in unforgettable regal style for your wedding, function, special event or conference at Australia's only medieval adventure park.

Use this incredible castle, its grounds and function spaces as an enchanting and unique backdrop. Set on the side of Mount Warrenheip, take in the beautiful views from the castle grounds over Ballarat and the surrounding countryside.

Kryal Castle's function rooms have had a spectacular makeover and are now open and ready to host you in unforgettable regal style - for the small and intimate to the grand and gracious, feast like royalty and enjoy the finest medieval entertainers.

The Abbey is a remarkable venue to accommodate medieval feasts, banquets and formal sit-down dinners. Alternatively, for larger dinners and receptions, a beautiful themed marquee on the arena can be fully customised to your requirements. For a more intimate affair, soak up the decadent surroundings of The Knights of the Round Table room.

Their dedicated team can create and customise your event to match your every need to celebrate in medieval style.



LOLA AND THE PROVINCIAL HOTEL

Specialising in elevated event experiences, The Provincial Hotel offers a private dining room and separate meeting room to reconnect with family, friends and colleagues.

The Provincial Hotel is an award-winning boutique hotel perfectly positioned in the CBD of historic Ballarat. Featuring 23 rooms, a stunning French-leaning bistro, Lola, Private Dining Room and The Meeting Room, this popular destination offers an exclusive and unique experience for every guest.

Guests also have access to in-room dining, bike hire to discover Ballarat, running trail suggestions and the charming outdoor courtyard featuring Clara the cocktail caravan.

121 Lydiard Street North, Ballarat
 (03) 5331 3399
 enquiries@theprovincialballarat.com.au
 www.theprovincialballarat.com.au

Room name	Theatre	Boardroom	Banquet	Caberet	Classroom	U-shape	Cocktail
Lola Library - Private Dining Room	30	15	23	-	-	17	35
The Meeting Room	20	20	-	-	-	18	-
Lola Courtyard	40	-	40	-	-	-	60



MITCHELL HARRIS WINES

The 140-year-old former produce store, tentmakers, and motor workshop is a showcase for the Mitchell Harris wine range, and the great wines of Western Victoria - providing the full wine bar and dining experience right in the heart of Ballarat.

The unique CBD site provides the ideal canvas full of character for your next event.

The upstairs seamstress floor is perfect for corporate meetings and presentations, catering for 10-60 people.

Catering for more than 120 people, The Barrel Shed is ideal for big parties, weddings, dinners and more. For intimate cocktail parties and dinners for groups of 10-30 people, you'll find The Cellar exemplary. The Wine Bar caters for small groups and celebrations between 10-20 people.

Explore Mitchell Harris' prize-winning wine list, or customise your own selection with winemaker, John Harris. The event team has created some unforgettable event menus and can help you with the ideal catering package for your event.

38 Doveton Street North, Ballarat CBD
 (03) 5331 8931
 www.mitchellharris.com.au

Room name	Theatre	Banquet	Cocktail
Seamstress Floor	50	40	60
The Barrel Shed	100	80	120
The Cellar	20	20	30
The Wine Bar	20	20	30



MERCURE BALLARAT HOTEL AND CONVENTION CENTRE

Fresh country air, dappled sunlight, the sound of bird-song and modern facilities backed by old-fashioned country hospitality - welcome to the Mercure Ballarat Hotel and Convention Centre.

Just over an hour from Melbourne CBD, Avalon and Melbourne airports and 90 minutes from Bendigo. The Mercure Ballarat is one of regional Victoria's largest conference venues, offering well-appointed, spacious accommodation (97 rooms including nine two-bedroom apartments), a purpose designed convention centre, versatile meeting facilities, restaurant, bar and day spa all located within the property's three hectare retreat style garden setting.

The property is locally owned and operated, and staffed with an experienced team of hospitality professionals who have come to call Ballarat and surrounds home.

Mercure Ballarat is located opposite the award-winning Sovereign Hill, the region's major tourist attraction and central to the heart of the historic goldfields. Mercure Ballarat is the perfect location to hold a major symposium, small meeting or truly memorable occasion. Their experienced team will ensure your next event is a complete success. Choose from a variety of versatile function and conference spaces with the capacity to cater for a small meeting of 20 delegates, a plenary for 440 delegates, banquet dinner for 600 guests or a networking event for 1000.

The venue's features include conference break-out rooms and pre-function areas, complemented by state-of-the-art audio visual facilities and in-house support, picturesque surroundings and natural light. The immaculate gardens and extensive decking overlooking the lake at the rear of the hotel also make this a splendid location for post meeting functions, weddings and celebratory events.

Room name	Theatre	Board Room	Banquet	Classroom	U-Shape	Cocktail
Convention Centre	850	-	600	390	-	920
Conv Centre - Part 1	350	-	260	150	-	400
Conv Centre - Part 2	425	-	300	195	-	460
Convention Pre-Function	-	-	-	-	-	460
Eureka Ballroom	300	-	180	110	50	250
Victoria Room 1	70	20	50	30	25	70
Victoria Room 2	80	20	60	30	25	80
Victoria Room	-	-	110	-	-	120
Conservatory Room	160	-	80	50	40	100
Stables Complex	50	20	-	25	25	-

613 Main Road, Ballarat
 (03) 5327 1200
conferences@mercureballarat.com.au
www.meetinballarat.com.au



440 Horsehill Road, Elaine
 (03) 5337 1100
functions@sovereignhill.com.au
www.sovereignhill.com.au

NARMBOOL

Narmbool is Sovereign Hill's beautiful pastoral property at Elaine, just 30 minutes from Ballarat or 90 minutes from Melbourne. Set across 2,000 hectares, with a magnificent garden and on-site accommodation, Narmbool is perfect for executive retreats, conferences, planning days, fine dining and functions.

The Garden Room and its terrace offer an elegant location for special dining experiences including functions, formal dinners and garden parties. This self-contained, fully-licensed restaurant can also be used for conferences.

Narmbool Lodge accommodation overlooks Williamson Creek and its picturesque valley. Guests to the lodge enjoy superb views across pasture and wetlands, and further upwards to Narmbool's bush conservation areas.

The lodge is a contemporary venue that has been developed for the boutique group and conference market. Designed in harmony with its natural surrounds, Narmbool Lodge has 16 accommodation rooms with ensuite facilities, each with commanding views.

Room name	Classroom	Theatre	Board Room	Banquet	U-Shape	Cocktail
Garden Room	80	120	50	130	40	150
Garden	-	-	-	-	-	130



725 Creswick Road, Ballarat
 (03) 5339 5944
enquiries.sportsclub@theroosters.com.au
www.northballarat.com.au

NORTH BALLARAT SPORTS CLUB

The North Ballarat Sports Club offers a bistro, TAB, sports bar, bingo centre and a full range of function options. With ample parking and located only minutes from the centre of Ballarat, the club has much to offer to ensure your function is a success.

With three rooms to choose from, access to a data projector, free Wi-Fi and the capability to run presentations through four television screens and two large projector screens, they can cater to all of your requirements.

The club can also offer you the use of their fully enclosed training rooms, suitable for team building activities and an auditorium for lectures or presentations.

Their functions service team pride themselves on offering a highly personalised service and will work with you to customise a package to suit your needs if their standard range of packages are unsuitable.

Room name	Classroom	Theatre	Board Room	Banquet	U-Shape	Cocktail
Main Room	160	300	-	180	-	300
VIP Room	60	60	-	40	30	80
Board Room	-	-	15	-	-	-
Auditorium	-	50	-	-	-	-



OSCARS HOTEL AND CAFE

Oscars Hotel and Café Bar is a unique art deco, boutique hotel in the heart of Ballarat's CBD, offering an amazing central location, inviting spaces, impressive food and brilliant service.

The Atrium has a beautiful glass roof which offers stunning natural light, giving the feeling of being outside whilst being protected from the elements. The room itself can accommodate parties ranging from 50-100 for a sit-down dinner or more than 150 cocktail-style. The capacity of the room can be increased by opening the floor-to-ceiling bi-fold French doors of the adjoining Garden Room to create a massive space for up to 250 guests.

The Garden Room features impressive chandeliers, hanging from a light filled glass atrium. Inbuilt AV equipment makes this room an excellent choice for large conferences.

The Long Room is a large private room with gas log fires. Brilliantly restored to its former 1930s glory, its charming heritage features offer a warm, inviting and private environment perfect for business meetings, private parties and dinners. The hotel also features 13 boutique accommodate rooms with full restaurant service and on-site parking.

18 Doveton Street, Ballarat
(03) 5331 1451
admin@oscarshotel.com.au
www.oscarshotel.com.au

Room name	Classroom	Theatre	Cabaret	Board Room	Banquet	U-Shape	Cocktail
Long Room	20	50	32	50	60	20	100
Garden Room	60	150	80	30	120	40	200
The Atrium	-	-	-	-	150	-	250



PIPERS BY THE LAKE

One of western Victoria's leading restaurants and function centres, the location of Pipers By The Lake is a stand out with its position on the foreshore of Lake Wendouree. It is also directly across the road from the Ballarat Botanical Gardens, with 40 hectares of lush gardens and lawns to explore.

The building itself sits as a grand pavilion nestled among century old trees and, from inside, the open-plan space leads out onto a deck immersed in the greenery of the foreshore. With ample free parking, Pipers by the Lake offer three options of catering.

Choose to start the day with a scrumptious cooked breakfast, tea and coffee, or for a more formal function, choose from a wide range of two and three course menu options.

Alternatively, roam free and mingle as gourmet finger food is served to guests.

The team at Pipers By The Lake are always available to assist you organise a worry-free, flawless and unforgettable occasion.

403 Wendouree Parade, Lake Wendouree
(03) 5334 1811
info@pipersbythelake.com.au
www.pipersbythelake.com.au

Room name	Classroom	Theatre	Board Room	Cocktail
Pavilion	110	110	110	200



QUEST BALLARAT

Quest Ballarat can cater for a range of corporate conferencing requirements, from small and intimate meetings to larger interactive workshops.

With on-site business support and tailored catering, your conferences will run smoothly.

Located in the heart of Ballarat and within close proximity to Sovereign Hill, Her Majesty's Theatre, Ballarat's shopping precincts, cafes and restaurants, the Quest Ballarat is perfectly positioned.

Quest Ballarat has 53 rooms, ranging from studio, one, two and three bedroom apartments.

7-11 Dawson Street North, Ballarat CBD
 (03) 5309 1200
 questballarat@questapartments.com.au
 www.questballarat.com.au

Room name	Theatre	Boardroom/Caberet	Classroom	U-Shape	Cocktail
Conference Room	30	20	15	20	30



SOVEREIGN PARK MOTOR INN

Sovereign Park Motor Inn is ideally located in the heart of the historic Eureka Precinct, just a short stroll to the city centre and to Sovereign Hill.

The property features three purpose-built conference rooms, plus a variety of smaller work environments and break out rooms. Each of the conference rooms feature natural light with full audio visual and presentation aids, including white boards, flip charts and projection facilities. Each room also offers flexible set up options and adjacent indoor open space.

Flexible and creative catering options are also available, assisting you to deliver a quality conference within any budget.

Forty-nine recently refurbished motel units offer all the modern conveniences and facilities you would expect of a quality four-star complex and are complemented by sensational recreation facilities including an indoor heated pool, spas, sauna and full gymnasium.

223 Main Road, Ballarat 3350
 (03) 5333 4066
 reservations@sovpark.com
 www.sovpark.com

Room name	Theatre	U-Shape	Classroom	Board Room
York Conference Room	100	35	80	30
Courtyard Conference Room	70	25	60	20
Poolside Conference Room	30	20	20	14



RACV GOLDFIELDS RESORT

As one of the largest accommodation venues in regional Victoria, RACV Goldfields Resort is the ideal venue for conferences and events.

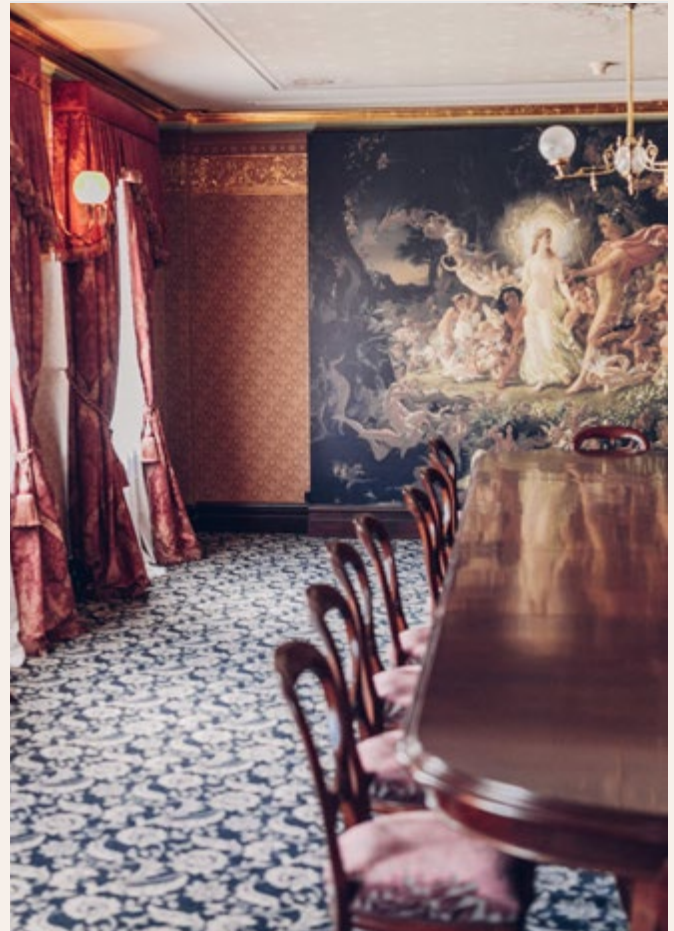
The resort is located just 90 minutes from the Melbourne CBD and Melbourne Airport. Set on 150 acres of state forest and a beautiful 18-hole championship golf course in the heart of the goldfields, the resort offers the perfect balance of recreation, business and entertainment. The resort has a full range of facilities to accommodate guests, including a restaurant and bar, extensive meeting rooms and function rooms, tennis courts, gymnasium, heated outdoor swimming pool and spa and mountain bike tracks.

All 137 accommodation rooms offer a king sized bed, spas and balconies with stunning views of the pool, golf course and surrounding Creswick State Forest.

With a dedicated team that will help you create your next successful conference or event, RACV Goldfields Resort is the perfect venue for an event or conference with a difference.

Room name	Area m ²	Classroom	Theatre	Cabaret	Board Room	Banquet	U-Shape	Cocktail
Grand Ballroom	540	360	600	320	-	400	-	600
Hepburn	180	120	170	64	-	100	60	180
Creswick	180	120	170	64	-	100	60	180
Lindsay	180	120	170	64	-	100	60	180
Hepburn Foyer	132	-	-	-	-	-	-	180
Lindsay Foyer	70	-	-	-	-	-	-	100
Macedon Boardroom	36	-	-	-	12	-	-	-
Pepperberry	72	45	64	40	20	50	24	70
Candlebark Library	59	24	40	24	18	30	18	35
Silver Gum	88	24	60	24	18	-	21	-
Ironbark	103	60	84	48	-	60	35	100
Banksia	184	84	140	64	42	130	40	150
Springs Bar & Terrace	250	-	-	-	-	60	-	200

1500 Midland Highway,
Creswick
(03) 5345 9600
event_goldfields@racv.
com.au
www.racv.com.au/venues



SOVEREIGN HILL

An internationally acclaimed tourist attraction, Sovereign Hill brings to life the colour and excitement of Australia's 1850s Gold Rush providing a full day's entertainment with hands-on experiences.

It's just like stepping back in time to goldrush Ballarat – from Main Street where costumed ladies and gents parade their new-found wealth, to the excitement of the diggings where visitors pan for real gold and it's 'finders keepers'!

There's an underground mine, street theatre and the opportunity to be photographed with costumed goldfields characters. See a spectacular \$150,000 gold pour and chat with the blacksmiths, candlemakers and confectioners who make souvenirs onsite.

Sovereign Hill offers a range of conferencing and function facilities as well as after dark experiences. Please contact our function team to arrange a personalised quote today.

Room name	Area m ²	Classroom	Theatre	Board Room	Banquet	U-Shape	Cocktail
New York Bakery	220	120	200	-	180	-	220
Charles Napier Hotel	100	75	100	40	100	30	120
Victoria Theatre	120	70	120	-	80	-	160
Theatre Retiring Room	66	-	-	22	22	-	-
United States Hotel Dining Room	55	-	40	26	40	18	40
Hotham Room	-	-	-	20	-	16	-
Café	-	-	-	-	170	-	250

Bradshaw Street, Ballarat
 (03) 5337 1100
functions@sovereignhill.com.au
www.sovereignhill.com.au



THE BALLARAT MINING EXCHANGE

The Ballarat Mining Exchange was built between 1887-9, and was used for trading of shares in mining companies during the gold rush. It still houses the Mining Exchange Gold Shop today.

The Mining Exchange underwent a major refurbishment and still retains many of the heritage features which make it an appealing venue for a wide range of events.

The venue is also suitable for corporate and private functions such as fashion parades, wine exhibitions, product launches, weddings, cocktail parties, exhibitions, markets and fundraising events.

The Mining Exchange has many unique features to make any occasion memorable including 130 seats which can be configured to suit any event, 18 alcoves, a fully equipped commercial kitchen and slab floor heating set to 21C.

The venue also has a more intimate room for smaller functions and corporate meetings. This room is carpeted and has electric wall heating.

Off street parking is available.



12 Lydiard Street North, Ballarat
 (03) 5333 5888
www.hermaj.com/bmx

Room name	Classroom	Theatre	Board Room	Cocktail
Pavilion	110	110	110	200



IMAGE: MATT DUNNE



ATTRACTIONS

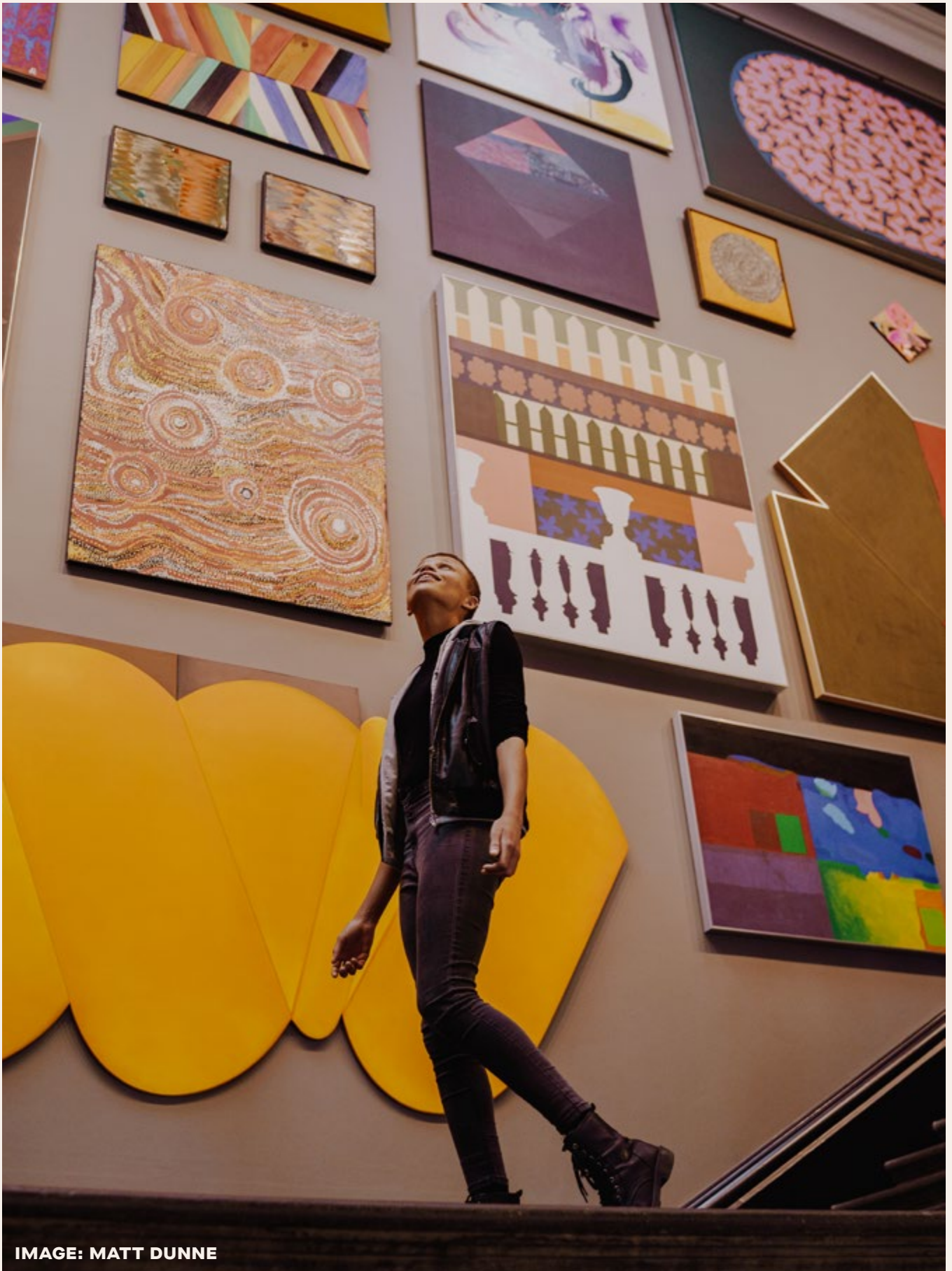


IMAGE: MATT DUNNE



ART GALLERY OF BALLARAT

The Art Gallery of Ballarat is one of Australia's greatest art galleries.

It offers residents and visitors a vigorous and exciting program of exhibitions, as well as an opportunity to explore Australia's art history.

The gallery is the oldest regional art gallery in Australia and is housed in a superb, heritage-listed building in the heart of Ballarat's historic CBD.

The heritage-listed gallery building has evolved to accommodate the expanding collection and now includes a range of spaces from grand and elegant nineteenth century rooms to stunning contemporary additions.

The shop stocks works by local artists and craftspeople as well as art books, souvenirs, gifts and toys. The gallery is fully accessible for people with disabilities.

40 Lydiard Street North, Ballarat

(03) 5320 5858

artgal@ballarat.vic.gov.au

www.artgalleryofballarat.com.au



AURA

Explore space, delve into the Dreamtime and re-live Australia's most important rebellion all while travelling under the night sky. Suitable for the whole family, AURA is the story of how gold revolutionised Australia.

Set over 64 acres, hundreds of stunning projections and an immersive storytelling experience transport you back in time. See the Wadawurrung story told with images projected on a magnificent lake, witness gunfights and protests erupting under the night sky, feel vibrations as stars explode in front of your eyes and dive into the chaos of the Eureka Rebellion as you witness the creation and discovery of the world's most precious metal.

Sovereign Hill, Bradshaw Street, Ballarat

(03) 5337 1199

aura@sovereignhill.com.au

www.sovereignhill.com.au



BALLARAT WILDLIFE

Only 90 minutes west of Melbourne, at Ballarat Wildlife Park you can get up close and personal to some of Australia's most famous native animals including Kangaroos, Koalas, a variety of reptiles ranging from Snakes to Lizards and even giant Tortoises. See a 3.5 metre long Anaconda, Tasmanian Devils, Victoria's only Komodo dragon, Crunch our 660kg, 5 metre Super Croc and you won't want to miss their new Little Penguins and tigers.

We are the perfect venue for incentive groups, Christmas parties, corporate entertaining and why not ask our staff about our VIP tours on offer. Events at Ballarat Wildlife Park can be tailored to suit. With various spaces, catering and beverage packages available, the Park is perfect for your next event.

250 Fussell Street, Ballarat East
(03) 5333 5933
www.wildlifepark.com.au



CRESWICK WOOLLEN MILLS

The Creswick Woollen Mill has more than 70 years of history to draw upon, and is now the only remaining woollen coloured spinning mill of its type left in Australia.

Creswick offers luxurious, high quality natural fibre products designed with Australian conditions in mind. Unique products created at the mill include alpaca blankets, throws, scarves and much more.

Visit the comprehensive knitwear store and see a great selection of natural-fibre fashion for men, women and children.

Conveniently located between Ballarat and Daylesford, the mill is a perfect destination for day-trippers, holiday makers and tour groups, both large and small.

A typical visit to the multi-award winning mill can include a self-guided tour of interactive exhibit A Very Fine Yarn, enjoying a cake and coffee and browsing the natural fibre store.

Railway Parade, Creswick
(03) 5345 2202
www.creswickwool.com.au



EUREKA CENTRE

The home Of the original Eureka flag.

Located on the site of the Eureka Stockade, visitors can learn about one of Australia’s most important historical events here.

The Eureka Flag is housed on the historic site of the 1854 Eureka Stockade and is surrounded by the scenic Eureka Stockade Memorial Gardens.

There is also a café onsite offering snacks and lunches for visitors and the local community.

102 Stawell Street South, Ballarat

(03) 5333 0333

eurekainfo@ballarat.vic.gov.au

www.eurekacentreballarat.com.au



SOVEREIGN HILL

An internationally acclaimed tourist attraction, Sovereign Hill brings to life the colour and excitement of Australia’s 1850s gold rush by providing a full day’s entertainment with hands-on experiences.

It’s just like stepping back in time to gold rush Ballarat – from Main Street where costumed ladies and gents parade their new-found wealth, to the excitement of the diggings where visitors pan for real gold.

There’s an underground mine, street theatre and the opportunity to be photographed with costumed goldfields characters. See a spectacular \$150,000 gold pour and chat with the blacksmiths, candlemakers and confectioners who make souvenirs on-site.

Bradshaw Street, Ballarat

(03) 5337 1100

enquiries@sovereignhill.com.au

www.sovereignhill.com.au

GETTING AROUND

Most of Ballarat is laid out in a sensibly planned grid, making the city surprisingly easy to access, whether by foot, car or public transport. There is plenty of parking near shopping areas, as well as, ample street parking. There is also a local bus service which operates daily from the Ballarat Railway Station and Sturt Street - Ballarat's main thoroughfare.

The friendly staff at Ballarat's Visitor Information Centre are always ready to offer navigational advice including everything you need to know about attractions, walking tours, scenic drives and nearby sights. All streets are well signposted, but don't hesitate to ask a local the way. Ballarat residents are justifiably proud of the city and keen to help visitors appreciate their home town.



TRANSPORT



AIRPORT SHUTTLEBUS

The Airport Shuttlebus service is a vital transport link for the western Victorian region. This service provides Ballan, Ballarat, Bacchus Marsh, Creswick and Melton residents with a regular transport service to the Melbourne Airport. They operate 69 regular weekly services to and from the airport, in addition to mini buses and five-star luxury coaches to suit conference groups.

Ballarat Railway Station
(03) 5333 4181
info@airportshuttlebus.com.au
www.airportshuttlebus.com.au



BALLARAT COACHLINES

Ballarat Coachlines provides charter solutions for your next conference or event. They have a large range of modern vehicles ranging in size from five-star coaches to smaller mini buses. Their modern fleet of charter vehicles are all equipped with air conditioning and seat belts and most have TV/ DVD and toilets.

86-92 Yarrowee Street, Sebastopol
(03) 5335 5300
admin@ballaratcoachlines.com.au
www.ballaratcoachlines.com.au



BALLARAT TAXIS

Ballarat Taxis fleet is multi-functional, catering for a broad section of users. They have 58 vehicles consisting of sedans, station wagons and wheel chair accessible vehicles, which also double as high occupancy vehicles. The most modern of these vehicles has a passenger capacity of 12 persons or two wheelchairs and up to six ambient persons.

(03) 5329 0000
(03) 5333 3630
admin@balltaxi.com.au



CHRISTIANS BUS

Christian's comprehensive and well maintained bus fleet comprises more than 100 buses, providing you with flexible, safe and reliable options for a range of excursions, events or trips.

With the help of Christian's Charter Team they can help plan an adventure packed journey or comfortable transportation from Melbourne and Avalon airport or to your conference venue.

9 - 11 Martin Drive, Delacombe
(03) 5335 5005
ballarat@christiansbus.com.au
www.christiansbus.com.au

EXPLORE THE SURROUNDING REGION

The Pyrenees Wine Region is located about half an hour outside Ballarat and is the perfect place to venture and explore during your event.

However long you manage to stretch your trip out for, you can't really help but have more than your fair share of delicious food and locally produced wine at the cafés, eateries and bakeries scattered across the region.

There are dozens of cellar doors where you can pick up a bottle or two, and more often than not, have lunch or a bit of a snack. The region is renowned for its numerous Pyrenees wineries, which have been given five stars in wine critic James Halliday's most recent Australian Wine Companion.

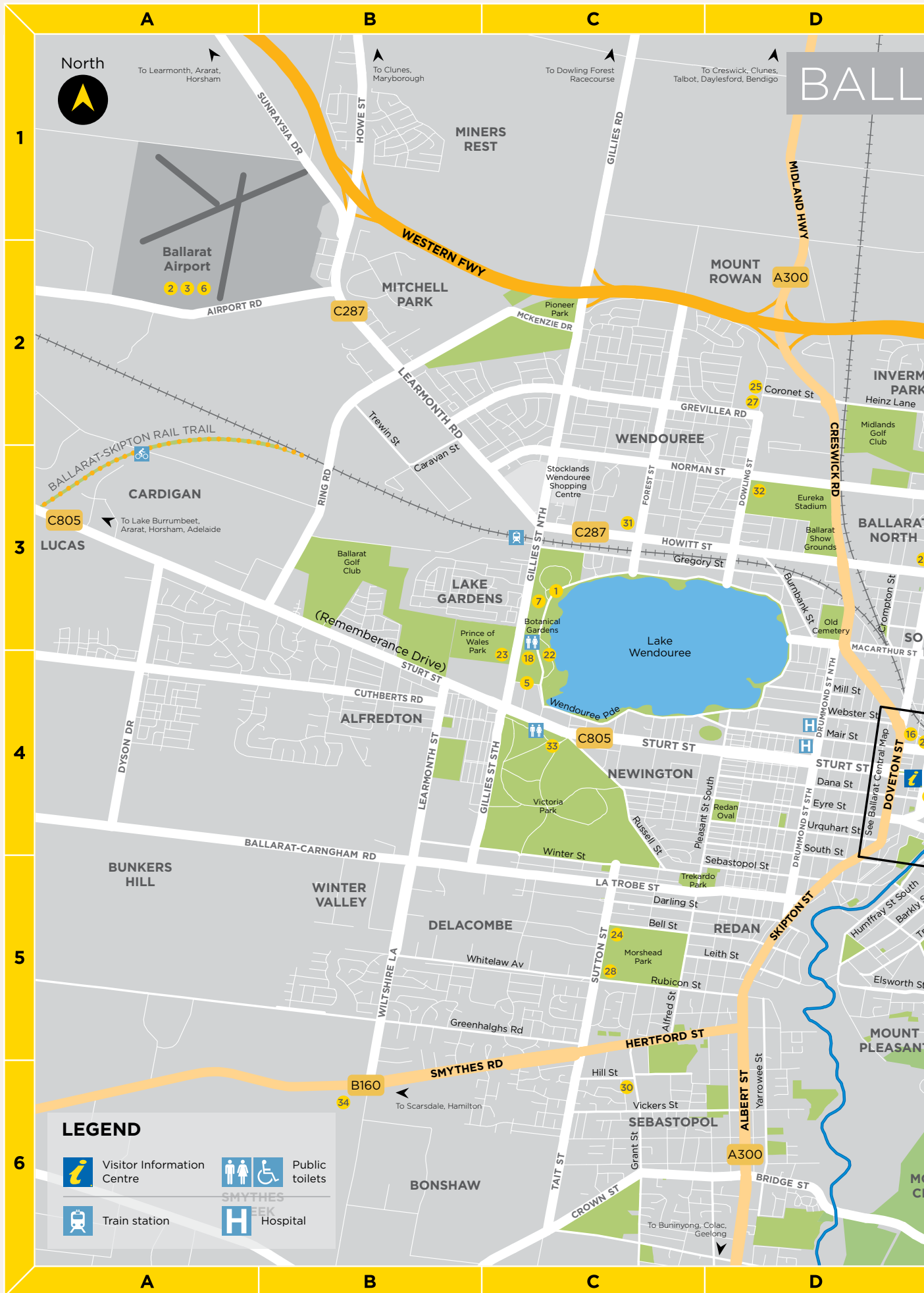
But eating and drinking isn't all that there is to do here though. It's a gorgeous part of the country, with ironbark forests, flora and fauna reserves, great spots to picnic, camp and fish, and lots of great bushwalking tracks. There are some lovely historic towns in the area as well, with Moonambel and Avoca the perfect places to use as home base during your visit.



IMAGE: ADAM DYSON

QUICK REFERENCE GUIDE

Business	Location	Function venue with accommodation	Function venue	Activities	Page number
Aura	Ballarat				27
Art Gallery of Ballarat	Ballarat CBD				6 & 27
Aunty Jacks	Ballarat CBD				6
Ballarat and District Trotting Club	Redan				7
Ballarat Golf Club	Alfredton				7
Ballarat Greyhound Racing Club	Ballarat				8
Ballaarat Mechanics' Institute	Ballarat				8
Ballarat Mining Exchange	Ballarat CBD				24
Ballarat Regional Soccer Facility	Ballarat				9
Ballarat Turf Club	Miners Rest				9
Ballarat Wildlife Park	Ballarat East				28
Boatshed Restaurant	Lake Wendouree				10
Civic Hall	Ballarat CBD				10
Craig's Royal Hotel	Ballarat CBD				11
Creswick Woollen Mill	Creswick				28
Eureka Centre	Ballarat East				11 & 29
Federation University	Mt Helen				12
The Grand	Ballarat				15
The George Hotel	Ballarat CBD				13
Golden City Hotel	Ballarat CBD				13
The Goods Shed	Ballarat CBD				14
Hop Temple	Ballarat CBD				15
Housey Housey	Ballarat CBD				16
Kryal Castle	Mt Warrenheip				16
Lola and the Provincial Hotel	Ballarat CBD				17
Mercure Ballarat Hotel and Convention Centre	Golden Point				18
Mitchell Harris Wines	Ballarat CBD				17
Narmbool	Elaine				19
North Ballarat Sports Club	Ballarat				19
Oscars Hotel and Café Bar	Ballarat CBD				20
Pipers By The Lake	Lake Wendouree				20
Quest Ballarat	Ballarat CBD				21
RACV Goldfields Resort	Creswick				22
Sovereign Hill	Golden Point				23 & 29
Sovereign Park Motor Inn	Ballarat				21





- Attractions**
- 1 Adam Lindsay Gordon Cottage C3
 - 2 Airport A1
 - 3 Anson Air Museum A1
 - 4 Art Gallery of Ballarat E4
 - 5 Australian Ex-POW Memorial C4
 - 6 Aviation Museum A1
 - 7 Ballarat Botanical Gardens C3
 - 8 Ballarat Observatory E5
 - 9 Ballarat Wildlife Park F4
 - 10 Eureka Centre F4
 - 11 Gold Museum E5
 - 12 Gold Rush Mini Golf H4
 - 13 Her Majesty's Theatre E4
 - 14 Mechanics' Institute E4
 - 15 Mill Markets H4
 - 16 Public Library D4
 - 17 Sovereign Hill E5
 - 18 Tramway Museum C4
 - 19 Federation University E4
 - 20 Camp St Campus E4
 - 21 Federation University SMB Campus E4
 - 22 Kryal Castle H4
- Entertainment and Recreation**
- 22 Adventure Playground C4
 - 23 Aquatic Centre B4
 - 24 Bray Raceway (trotting club) C5
 - 25 Dowling Street Sporting Complex D2
 - 26 Major League Indoor Sports Centre, Ballarat Indoor Go Karts & Laserforce, Tenpin Bowling Centre D3
 - 27 Minerdome D2
 - 28 Morshead Park (greyhounds) C5
 - 29 Regent Multiplex Cinema D4
 - 30 Southern Indoor Tennis Centre C6
 - 31 Wendouree Centre for Performing Arts C3
 - 32 Wendouree Sports & Events Centre D3
 - 33 Victoria Park Inclusive Playspace C4
 - 34 Delacombe Town Centre B6

